

# FOR SALE



## A RARE CONCRETE INDUSTRIAL & SELF-STORAGE PROPERTY WITH EXPANSION POTENTIAL

61,422SF | Mixed-Use Industrial & Storage | West Kelowna

2470 & 2476 West Lake Road, West Kelowna BC

**STEVE LAURSEN**

PERSONAL REAL ESTATE CORPORATION

**250.808.8101**

[www.rlkcommercial.com](http://www.rlkcommercial.com)

ROYAL LEPAGE KELOWNA

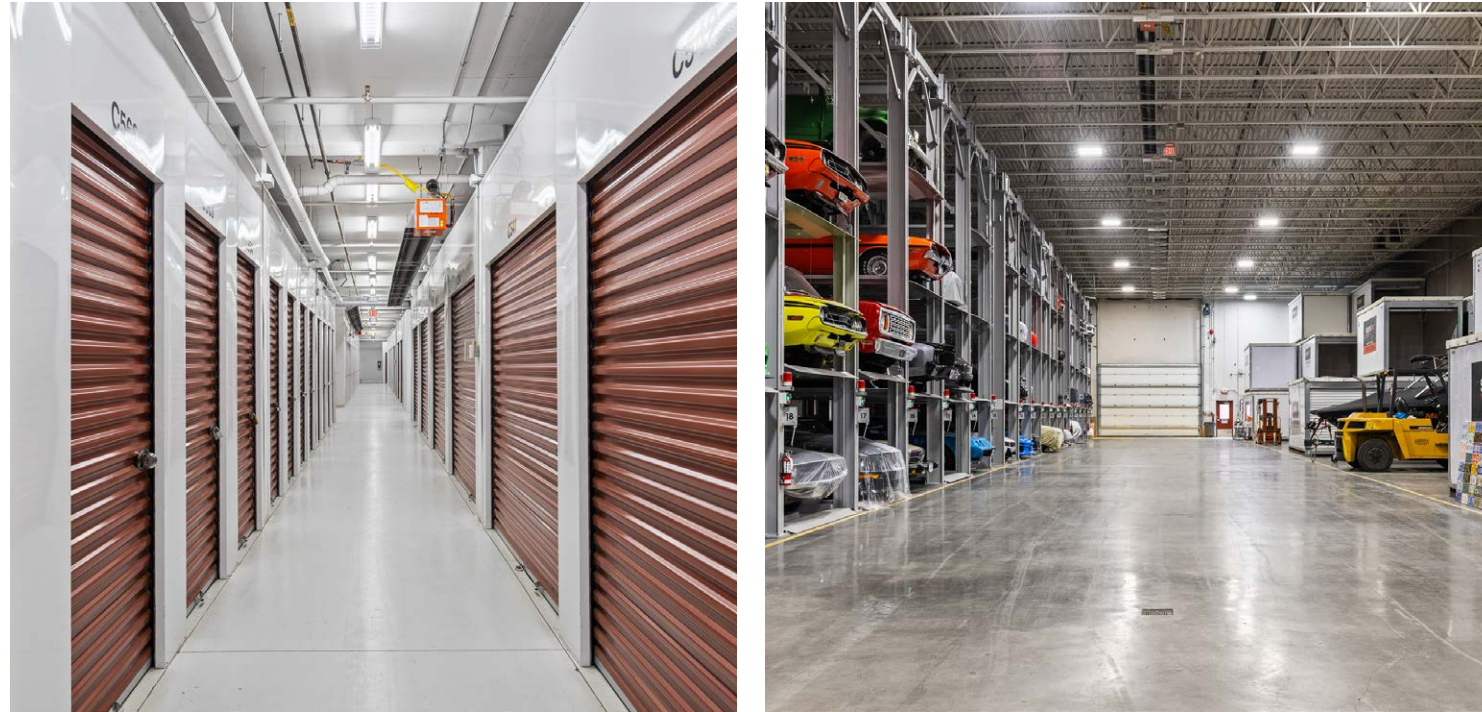
COMMERCIAL

# EXECUTIVE SUMMARY

The Property totals **61,422 SF** and consists of two distinct components:

- A **fully operating self-storage business** comprising **40,186 SF of gross storage area with 181 physical units**, providing established, in-place cash flow; and
- A **21,609 SF concrete industrial warehouse and office component with 27' clear height**, offering significant operational flexibility to occupy the space for an operating business, lease it to a third-party industrial user, or expand the storage operation by increasing storage density, subject to municipal approvals.

This mixed-use industrial property is well suited for an entrepreneurial operator seeking immediate storage cash flow from an established business, paired with a flexible industrial component that can be occupied, leased, or integrated into an expanded storage strategy over time.



# KEY INVESTMENT METRICS

- Total Building Area: 61,422 SF
- Gross Storage Area: 40,186 SF
- Net Rentable Storage Area: 32,893.5 SF
- Warehouse / Office : 21,609 SF
- Construction: Concrete
- Expansion Potential: Yes

# INVESTMENT HIGHLIGHTS

## Hybrid Industrial & Storage Platform

- Purpose-built concrete facility totaling **61,422 SF**
- Combination of personal mini storage, commercial storage, industrial warehouse, office, and specialty uses
- **181 physical units**, providing immediate, diversified in-place cash flow
- Approximately 65% of the building area configured for self-storage, with the balance offering functional industrial space

## Expansion Potential

- Concrete structure engineered to support multiple levels
- **27-foot clear height** within the warehouse supports multi-level storage conversion
- Ability to increase rentable area over time through active repositioning

## Specialty & Premium Infrastructure

- Commercial-grade 72-car lift
- Approved helicopter landing pad
- Second helicopter pad roughed in for future use
- Outdoor pressure washing station

## Prime West Kelowna Location

- Two blocks from Highway 97 with exposure to approximately 70,000 vehicles per day
- Located on Stevens Road, a key secondary arterial road
- Strong visibility, access, and site circulation



# PROPERTY DETAILS

## WAREHOUSE AND STORAGE BUILDING

FEATURE	DETAILS
Address	2470 & 2476 West Lake Road, West Kelowna, BC
Total Building Area	61,422 SF
Building Area	±42,472 SF
Warehouse / Office	21,609 SF (27' clear height)
Gross Storage Area	40,186 SF (181 units)
Construction	Concrete
Expansion Potential	Yes
<b>Price</b>	<b>\$17,900,000 (\$291/sf)</b>

## DEDICATED STORAGE (STRATA UNITS)

FEATURE	DETAILS
Address	Units 120, 220, 320, and 428 – 2476 West Lake Road, West Kelowna, BC
Total Area	±18,950 gross SF
Construction	Concrete
Year Built	2008
Unit 120	±4,823 SF
Unit 220	±4,512 SF
Unit 320	±4,830 SF
Unit 428	±4,785 SF
Legal Descriptions:	PIDs 027-242-340, 027-242-358, 027-242-366, 027-242-374
2025 Property Taxes (Combined)	\$103,548.78
Zoning	I1 – Light Industrial



2470 & 2476 WEST LAKE ROAD, WEST KELOWNA BC

STEVE LAURSEN - ROYAL LEPAGE KELOWNA COMMERCIAL

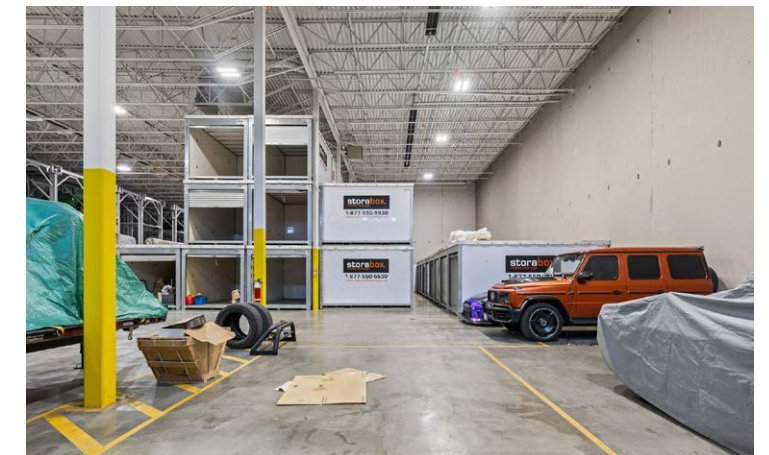
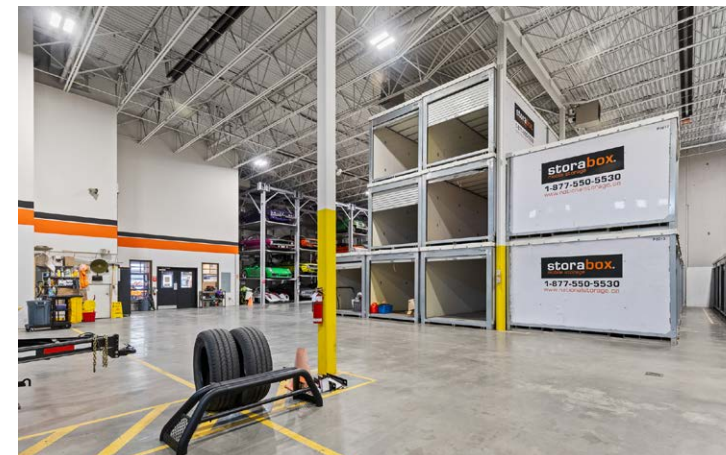
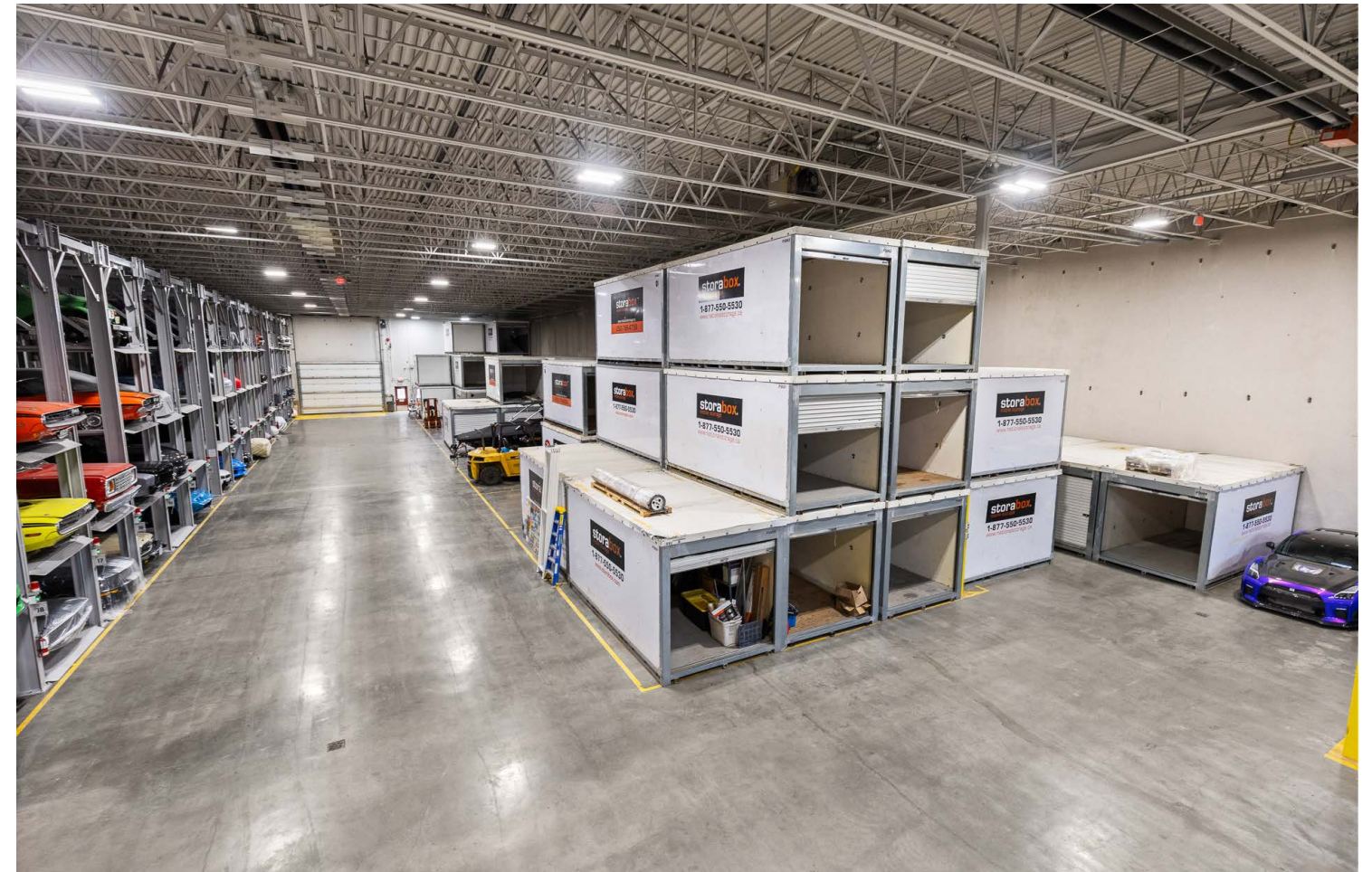
# PROPERTY DETAILS

## STORAGE SUMMARY

FEATURE	DETAILS
Drive-Up Units:	32
Interior Units	149
Total Units	181
Net Rentable Area	32,893.5 SF
Average Unit Size	181 SF
Finishes	Roll-up and garage-style doors
Car Storage	72 vertical car lifts (8' x 16')
Pod Storage	Mobile pods currently sold on an individual basis

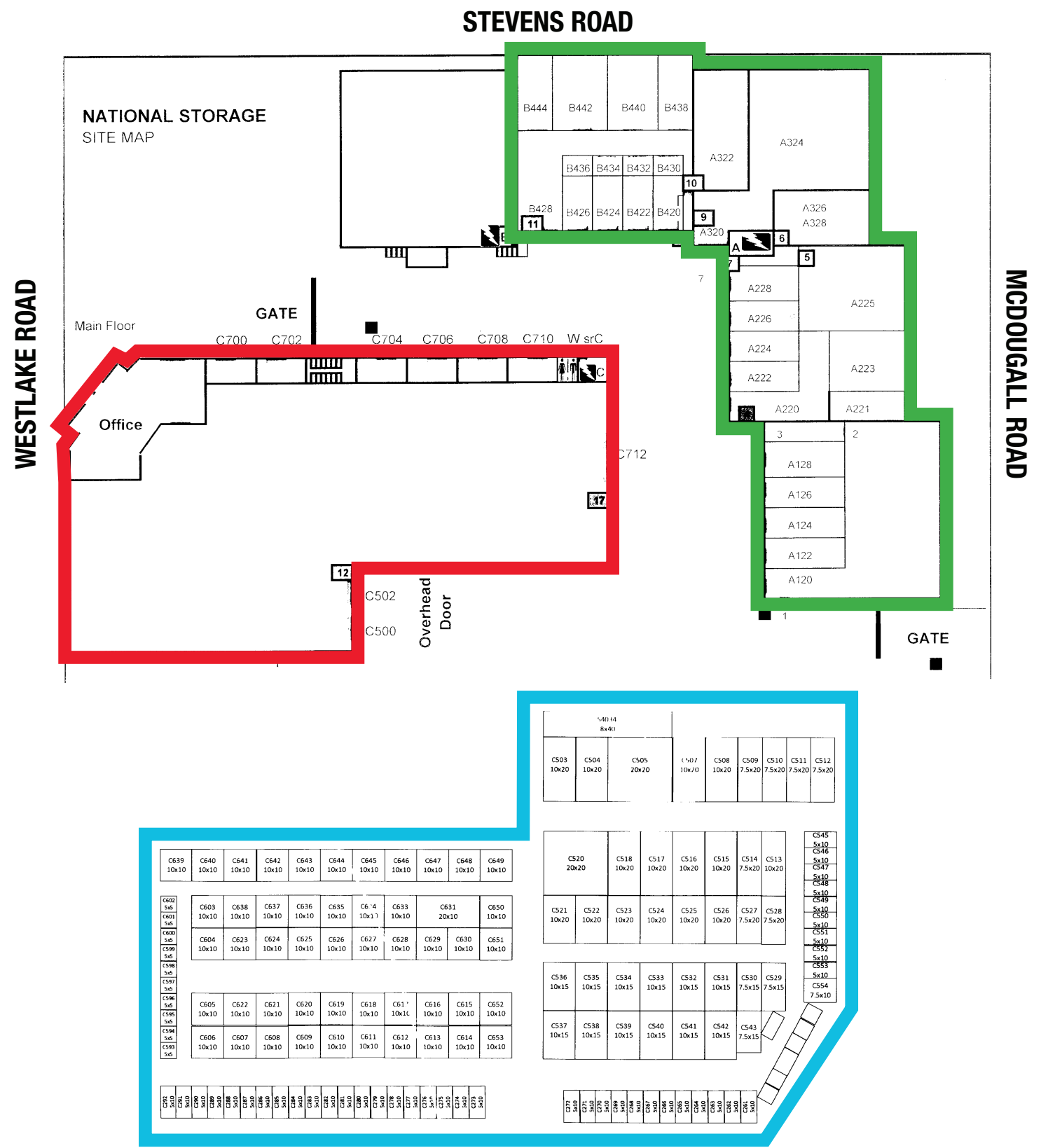
## DIVERSIFIED USES

- Personal self-storage
- Commercial premium drive-up storage
- Office space
- Luxury vehicle storage
- Mailboxes
- Mobile pod storage



# FLOOR PLANS

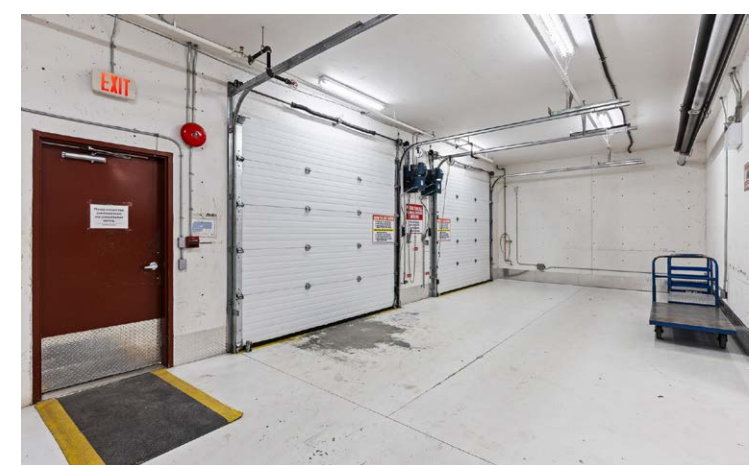
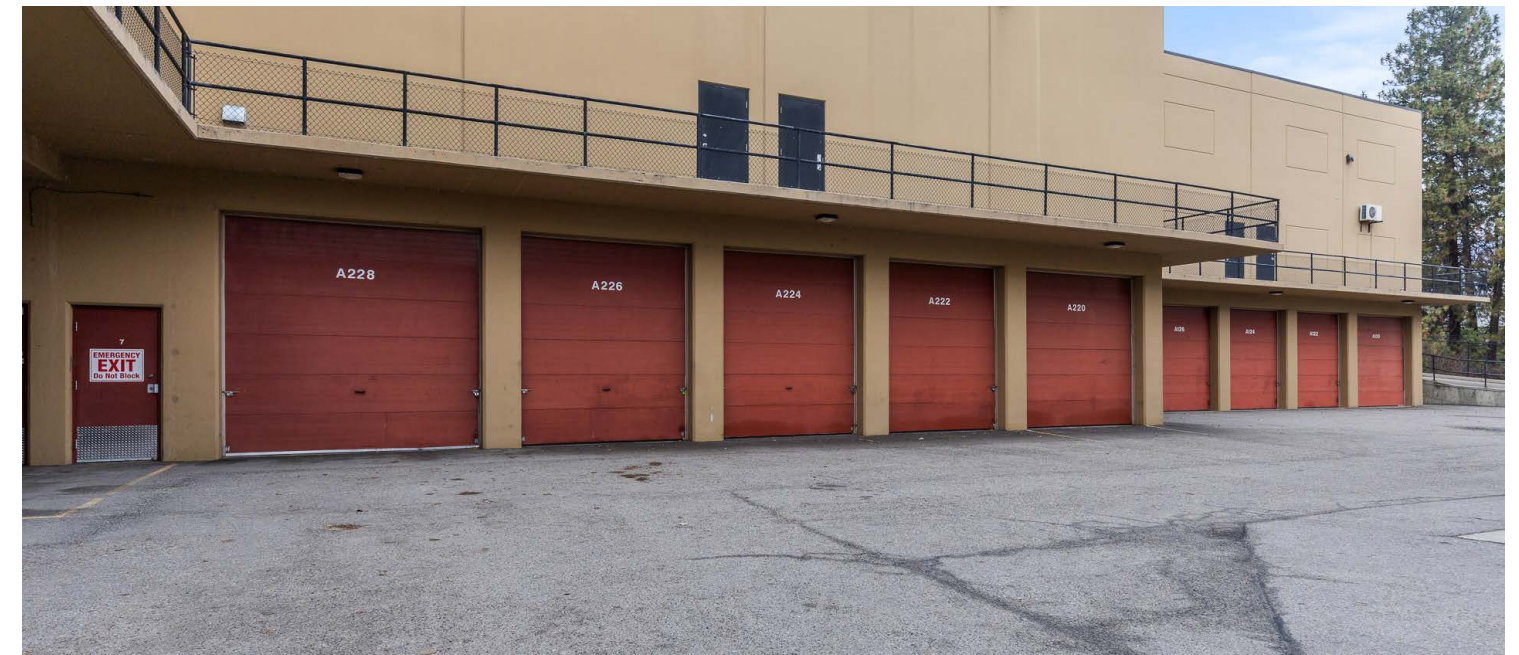
— WAREHOUSE     
 — LOWER FLOOR SELF-STORAGE     
 — STRATA UNITS SELF-STORAGE



2470 & 2476 WEST LAKE ROAD, WEST KELOWNA BC

# SECURITY & ACCESS

The Property benefits from a robust security and access infrastructure designed to support both personal and commercial users. Features include PTI security systems, two commercial security gates, dual ingress and egress points for emergency access, eight coded access keypads, and secure, controlled site circulation. This infrastructure supports premium storage users, specialty tenants, and long-term operational durability.



STEVE LAURSEN - ROYAL LEPAGE KELOWNA COMMERCIAL

# LOCATION

2470 West Lake Road is located just two blocks off Highway 97, the region’s primary north–south transportation corridor, benefiting from exposure to approximately 70,000 vehicles per day. The Property fronts Stevens Road, a well-traveled secondary arterial that enhances both visibility and accessibility while maintaining efficient industrial access.

Approximate drive times include:

Approximate drive times include:

- Highway 97: 2 minutes
- Downtown West Kelowna: 6 minutes
- Downtown Kelowna: 9 minutes



2470 & 2476 WEST LAKE ROAD, WEST KELOWNA BC

# FUTURE UPSIDE & INVESTMENT POSITIONING

This offering represents an entrepreneurial ownership opportunity supported by an established self-storage business providing immediate cash flow, alongside a concrete industrial warehouse component offering long-term flexibility. The storage operation delivers recurring income, while the warehouse allows a purchaser to occupy the space, lease it to a third-party user, or integrate it into an expanded storage strategy over time, subject to municipal approvals. This structure allows an owner to actively shape the asset to their operational and growth objectives.



STEVE LAURSEN - ROYAL LEPAGE KELOWNA COMMERCIAL



**STEVE LAURSEN**

PERSONAL REAL ESTATE CORPORATION

**250.808.8101**

[www.rlkcommercial.com](http://www.rlkcommercial.com)

ROYAL LEPAGE KELOWNA

**COMMERCIAL**

This disclaimer shall apply to Steve Laursen Personal Real Estate Corporation (PREC\*), RLK Commercial, Royal LePage Kelowna Real Estate Brokerage, and to all other divisions of the Corporation; to include all employees and independent contractors.

The information set out herein, including, without limitation, any projections, images, opinions, assumptions and estimates obtained from third parties (the "Information") has not been verified by Steve Laursen PREC\*, RLK Commercial, and Royal LePage Kelowna does not represent, warrant or guarantee the accuracy, correctness and completeness of the Information. Steve Laursen PREC\* does not accept or assume any responsibility or liability, direct or consequential, for the Information or the recipient's reliance upon the Information.

The recipient of the Information should take such steps as the recipient may deem necessary to verify the Information prior to placing any reliance upon the Information. The Information may change and any property described in the Information may be withdrawn from the market at any time without notice or obligation to the recipient from Steve Laursen PREC\*.

Steve Laursen PREC\* and the Royal LePage Kelowna logo are the service marks of Steve Laursen PREC\* and Royal LePage Kelowna.

Limited and/or its affiliated or related companies in other countries. All other marks displayed on this document are the property of their respective owners.

All Rights Reserved.