

FOR LEASE



UNIT D1 - 375 POTTERTON ROAD, KELOWNA BC

**16,250 SF INDUSTRIAL
WAREHOUSE SPACE**

STEVE LAURSEN
PERSONAL REAL ESTATE CORPORATION
INDUSTRIAL. COMMERCIAL. INVESTMENT REAL ESTATE

250.808.8101
stevelaursen@royalpage.ca
www.stevelaursen.com



Unit D1 – 375 Potterton Road, Kelowna BC

PROPERTY DETAILS

Leasable Area: 16,250 SF

Total Building
Size: 130,000SF

Loading: Grade

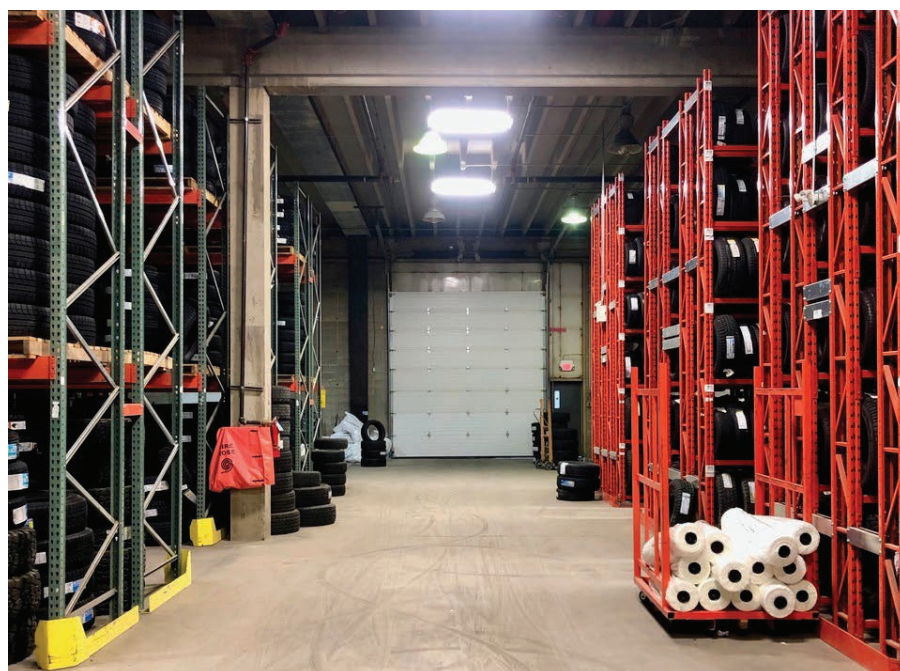
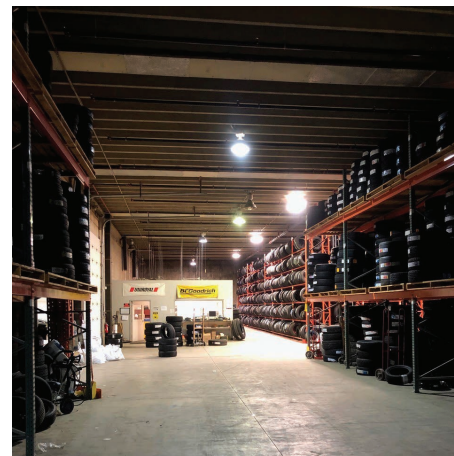
Zoning: I3

Parking: Onsite non-reserved

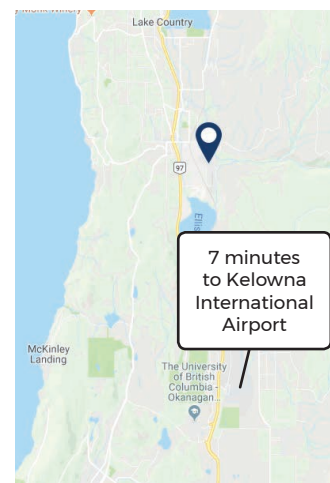
Rate: \$10/SF

Operating Costs: \$1.85

Possession: Spring 2019



- 16,250 SF
- 18' clear height
- 300 AMP – 3 phase electrical service
- Office area
- Lunch Room
- Upgraded sprinklers rated for tire storage
- 1 – 14'x14' grade load door
- 1 – 8'x8' grade load door
- New T5 Highbay lighting throughout upon possession
- Onsite parking



STEVE LAURSEN
PERSONAL REAL ESTATE CORPORATION

INDUSTRIAL. COMMERCIAL. INVESTMENT REAL ESTATE

250.808.8101
stevelaursen@royallepage.ca
www.stevelaursen.com